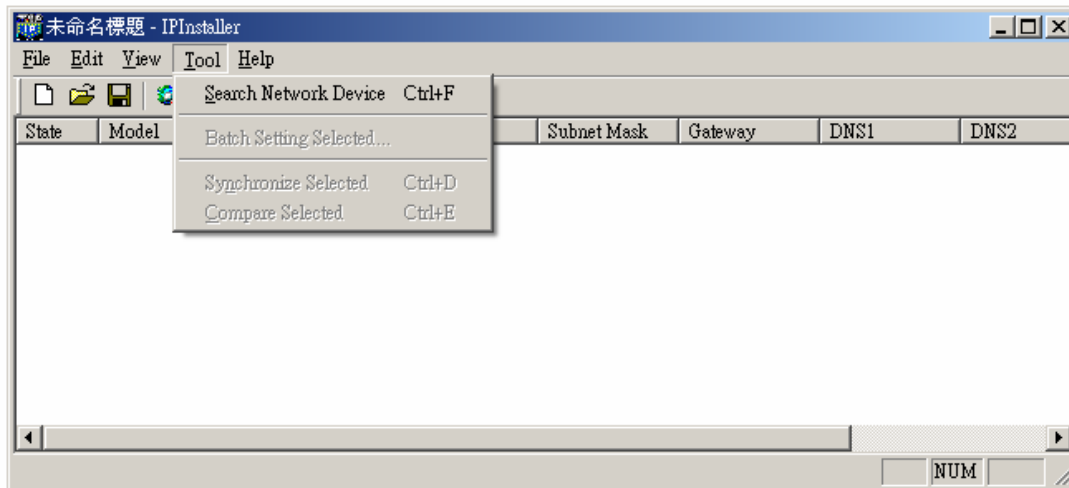
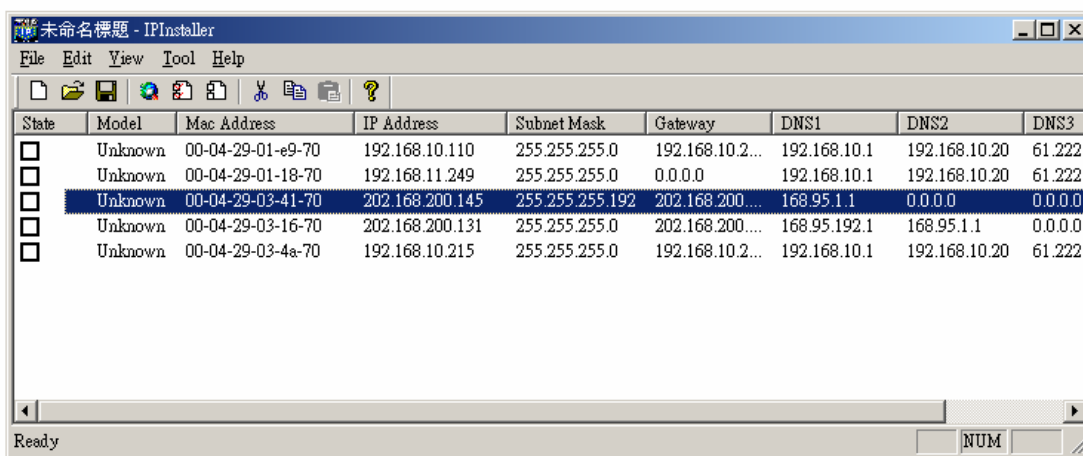


IPInstaller Setup Guide

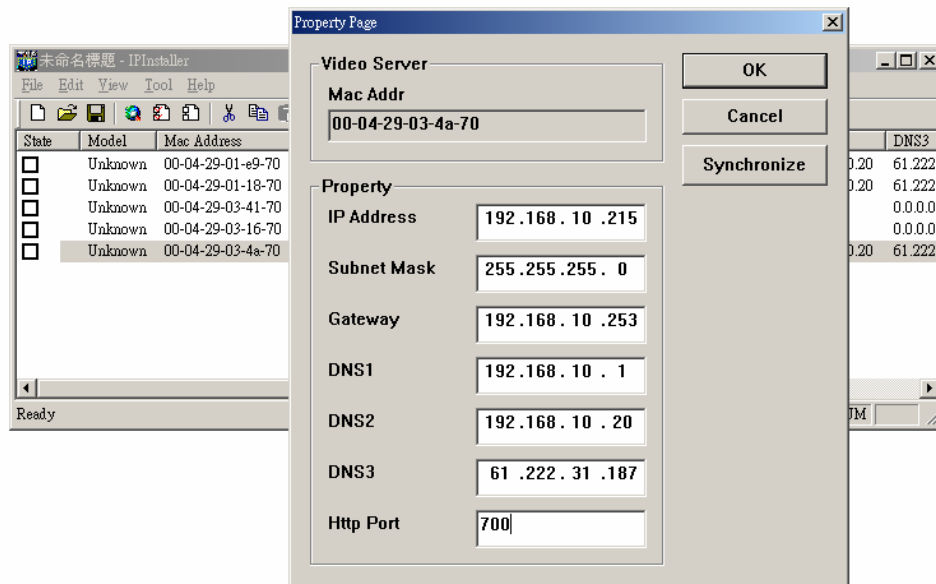
1. Install and run IPInstaller.exe
2. Tools→Search Network Device



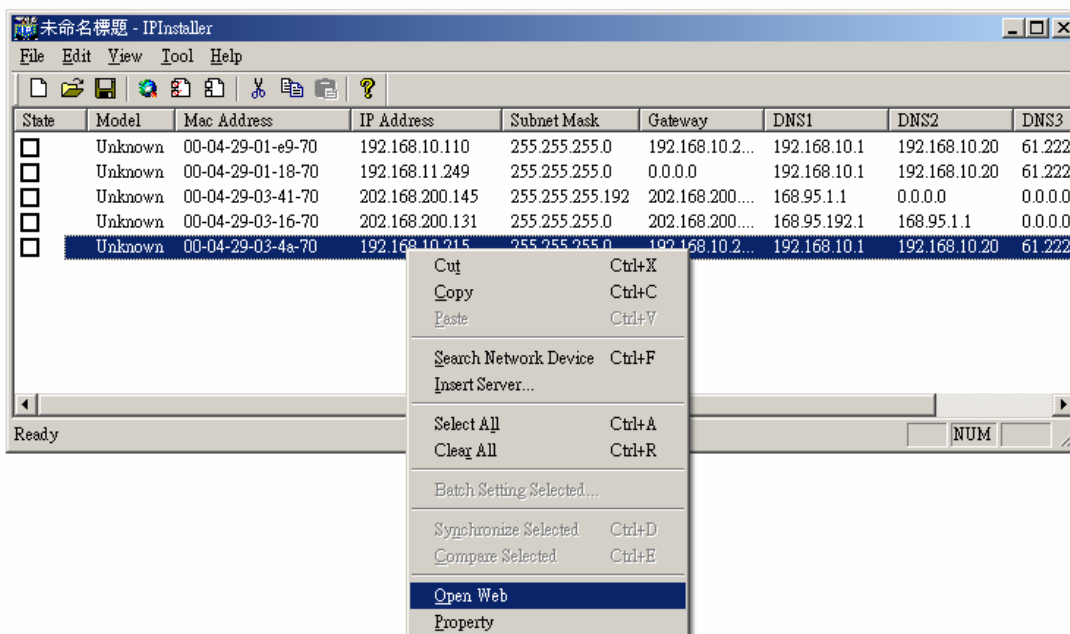
3. All the DVRs on the same bus will be listed on the screen.



- Click twice on the wanted DVR, below pop-up will show up. After entering all needed information, click on the button “Synchronize” to complete the setting.



- Click right on the set DVR, and then the web page will be shown on the screen, and the user can see the image coming from the selected DVR remotely.



- If you have to search the connected DVRs again, remember to clear the previous-listed DVRs first. Otherwise, the previous-listed DVRs will remain on the list, though all or some of them had already disconnected. Click right and choose “Cut” to clear the selected DVR.